

When it comes to boat shopping.....

The typical boat buyer will make many comparisons before making the final decision on the intended purchase. Among these are the comparisons of size, price, decor, features, quality, and designed safety factors. The most important comparison a boat buyer should make is the safety features of each boat.

A lot can be said about the MATILDA 20. The unique feature is the retractable drop keel which sets her apart from other similar sized yachts designed for easy trailering, launching, and sailing in shoal waters. The drop keel has opened a totally new dimension in weekend cruising, comfort and relaxed sailing. (See flip side of page on the drop keel system).

The drop keel gives the MATILDA 20 extremely good stability. She has been sailed in weather conditions when some larger sized yachts head for shore. Owners have been caught out in 50 m.p.h. winds and 14-foot waves, and the MATILDA 20 pulled them through smoothly.

Only a good, solidly constructed hull with compatible spars, rigging, and deck hardware can withstand such adverse weather. Otherwise, what good is a seaworthy design if the construction and deck equipment don't measure up?

The weather is one element you cannot order, control, punish, or ignore. So wouldn't you feel more secure with a MATILDA 20 which you can trust to take care of you when the sailing gets rough?

Check out the MATILDA 20. A good place to start is at your dealer's office. Or talk to one of our many happy owners.

Better yet, write to us. We will send you a detailed standard equipment list. A four-colour brochure. Or whatever available information you may desire on the MATILDA 20.

We manufacture a good line of sailboats to choose from... MATILDA 16 – MATILDA 20 – MATILDA 23 – ALOHA 28 – ALOHA 34.



The MATILDA 20 is fast becoming an international trailer-sailer. Worldwide ownership exceeds 1000. She is the only trailer-sailer that can be found in many countries of the world.

The more you shop around for a boat,
the more you'll appreciate one of ours.

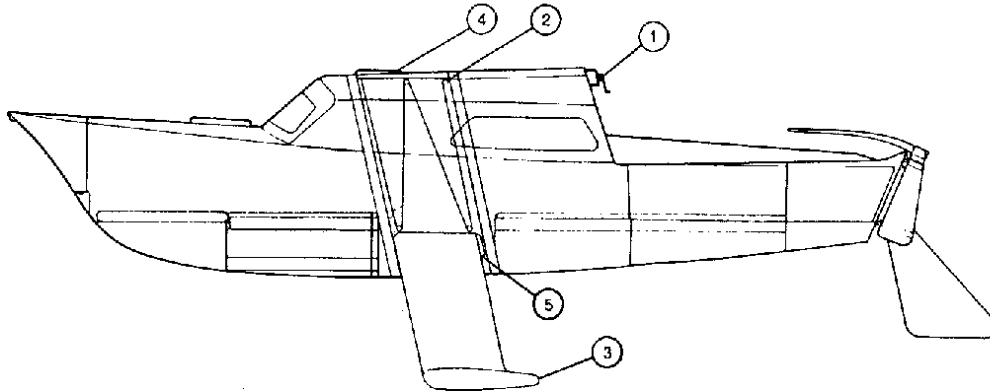


Ouyang Boat Works Limited

1636 CHARLES STREET
WHITBY, ONTARIO, CANADA L1N 1B9
PHONE: (416) 668-5511

Matilda 20 drop keel

- a classic example of constructive thinking in the design stage.



HOW THE DROP KEEL AFFECTS YOUR SAILING, SAFETY, AND CRUISING COMFORT.

Steel keel plate with lead ballast Fillet at top tralling edge prevents keel from slipping out of housing. Trunk of solid fibreglass heavily reinforced at base. Oak frame with grooves guide the keel plate.

SIMPLE MECHANISM:

The drop keel is raised and lowered vertically in its trunk by cranking a winch (1). Four ball-bearing sheaves (2) make it effortless for a person to operate the winch.

MAINTENANCE:

Access to and maintenance of the drop keel is simple. The inspection port and removable panel are easily accessible.

TRAILERABILITY:

The retractable drop keel in the up position (nine inches) enables easy trailering, sailing, or mooring in shallow waters.

LESS WEIGHT:

With the ballasted bulb (3) located at the very bottom of the board, centre of gravity is lower to give the MATILDA 20 added stability without unnecessary extra bilge ballast.

This not only makes the boat lighter to tow, but gives a 'soft cushion' ride when descending a wave. A heavier ballast for the same displacement would have a greater tendency to pound.

STABILITY:

The MATILDA 20 is an extremely stiff boat capable of handling even in the most adverse sea. The ballasted board with her wide beam gives her exceptional stability.

Tests by the designer have shown that the MATILDA 20 will self right, even with the board up!

DECK SUPPORT:

The coach roof and mast load (4) of the MATILDA 20 is well supported by the three cabin bulkheads, and the keel housing.

PERFORMANCE:

The drop keel in the down position gives the MATILDA 20 a maximum lateral resistance plane

CONSTRUCTION:

for efficient upwind work. Raising the keel up will reduce wetted surface, thus increasing downwind performance.

The MATILDA 20 can also be sailed with the keel in any position as the occasion demands.

OPERATING THE KEEL WINCH:

The MATILDA 20 keel is designed for convenient winching. The winch (1) is located outside high against the cockpit bulkhead. This enables a person to operate the winch standing up without having to bend over, or having to go below deck to get at the winch.

CABIN SPACE:

The drop keel eliminates the inconvenient centreboard housing 'hump' you find in most boats her size. The MATILDA 20 cabin provides for a very spacious interior for a 20 footer.

She is one of the very few boats in this size range that has more sitting headroom in the forecabin, a view of the foredeck through two forward windows, two separate cabins, with provision for a head compartment that is completely separated from the two cabins.

GROUNDING:

The reader is reminded that most groundings usually occur in uncharted or unfamiliar shallow waters. Whether sailing a centreboard, swing keel, fixed keel or in this case a retractable drop keel, a good sailor should be able to avoid shoals by using his eyes, charts, experience, and boating sense.

The retractable keel or centre-board sailors have the added advantage over the fixed keel sailors in that they are able to raise their keel or centreboard when they feel their keel or centreboard touching bottom.

However, even the best of sailor could run aground. With this in mind, we have designed the construction of the MATILDA 20 keel housing such that damages to the keel or housing when run aground is mini-mal.

Owners have had very little problem in this area, and the drop keel poses no problems or under any disadvantage when grounded as compared to a swing keel or centre-board.

The housing structure for the keel end the keel itself are raked forward to distribute the stress evenly upon impact. The initial point of impact is at the heavy stainless steel safety boll (5). This bolt will probably bend upon a very severe impact. And the replacement of a new bolt is simple and at a very low cost.